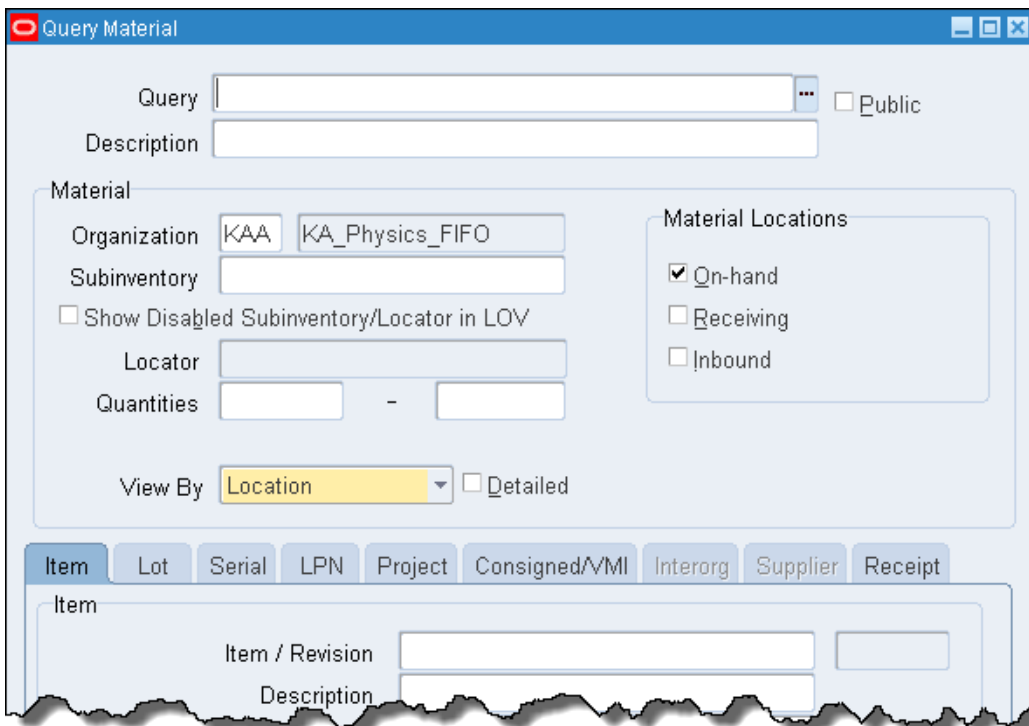
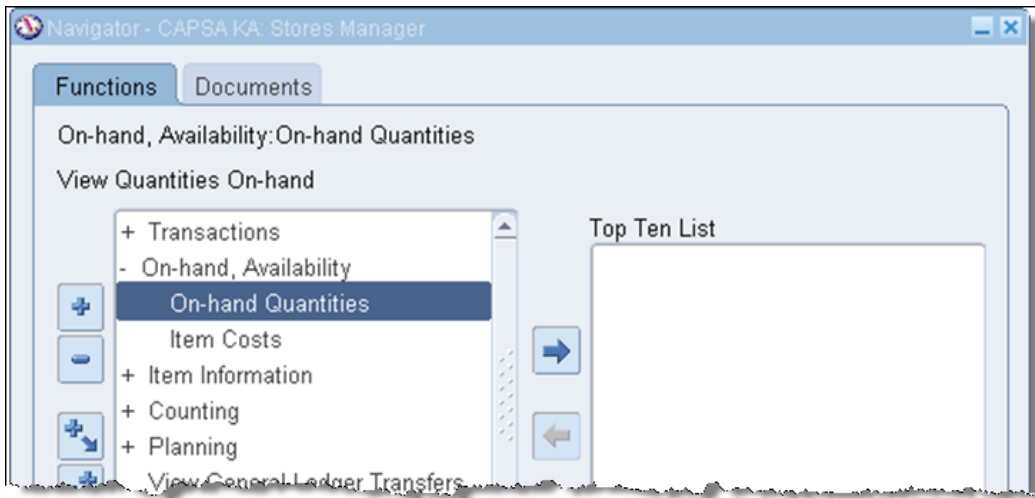




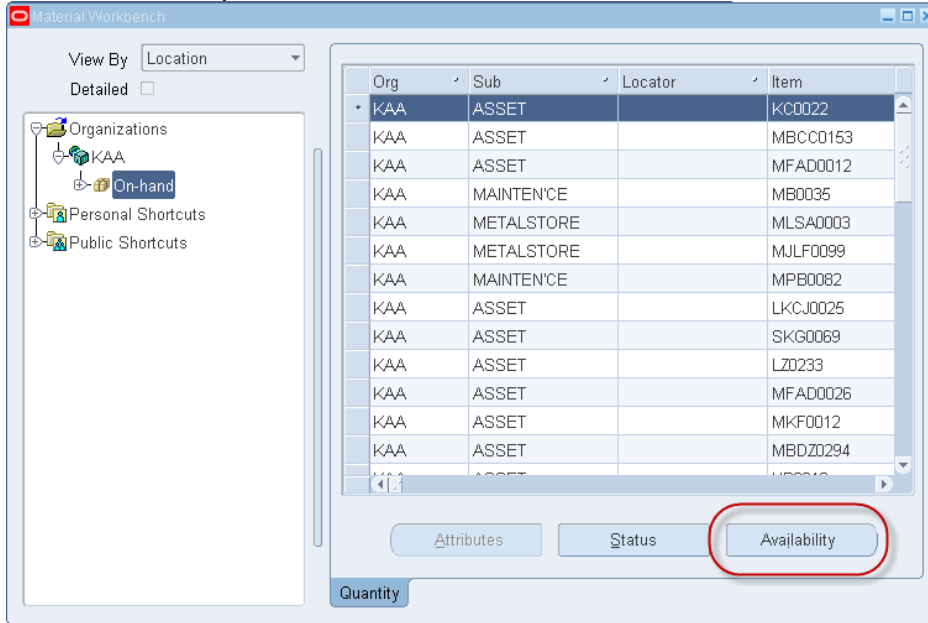
# On-hand Quantities

**Responsibility:** CAPSA XX: INV Stores Supervisor Responsibility  
**Navigate:** On-hand, Availability → On-hand Quantities

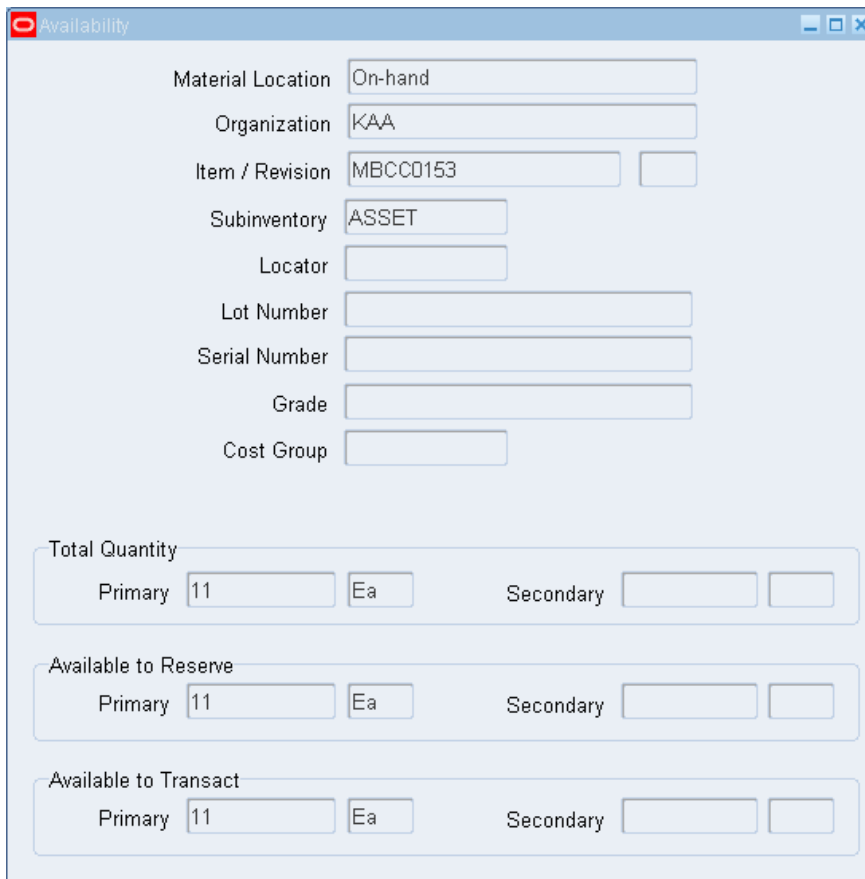
This view gives details of the stock quantities on-hand at any given time.



1. Press **Enter** to open the materials workbench



2. Select the stock item that you want to view and click the **Availability** button. You will then get a screen showing the on-hand quantities for that stock item.



*NB. The options on the Tools menu are currently unavailable and are greyed out.*